

March 2-3, 2010 Coastal Storm

Threat Assessment for Northeast South Carolina and Southeast North Carolina



Prepared at: 3:30 PM March 1, 2010

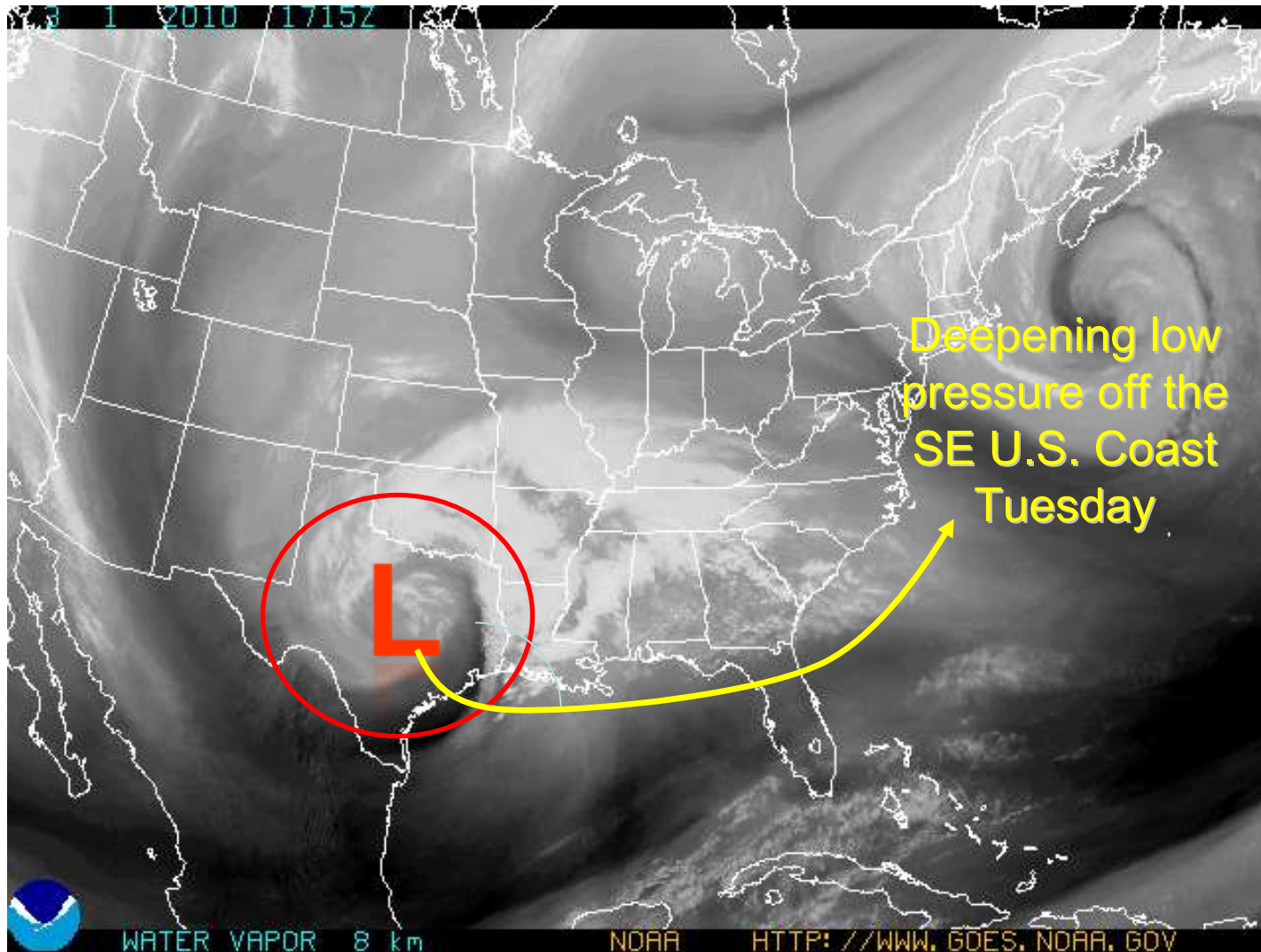
Michael Caropolo

michael.caropolo@noaa.gov

NWS Wilmington, NC

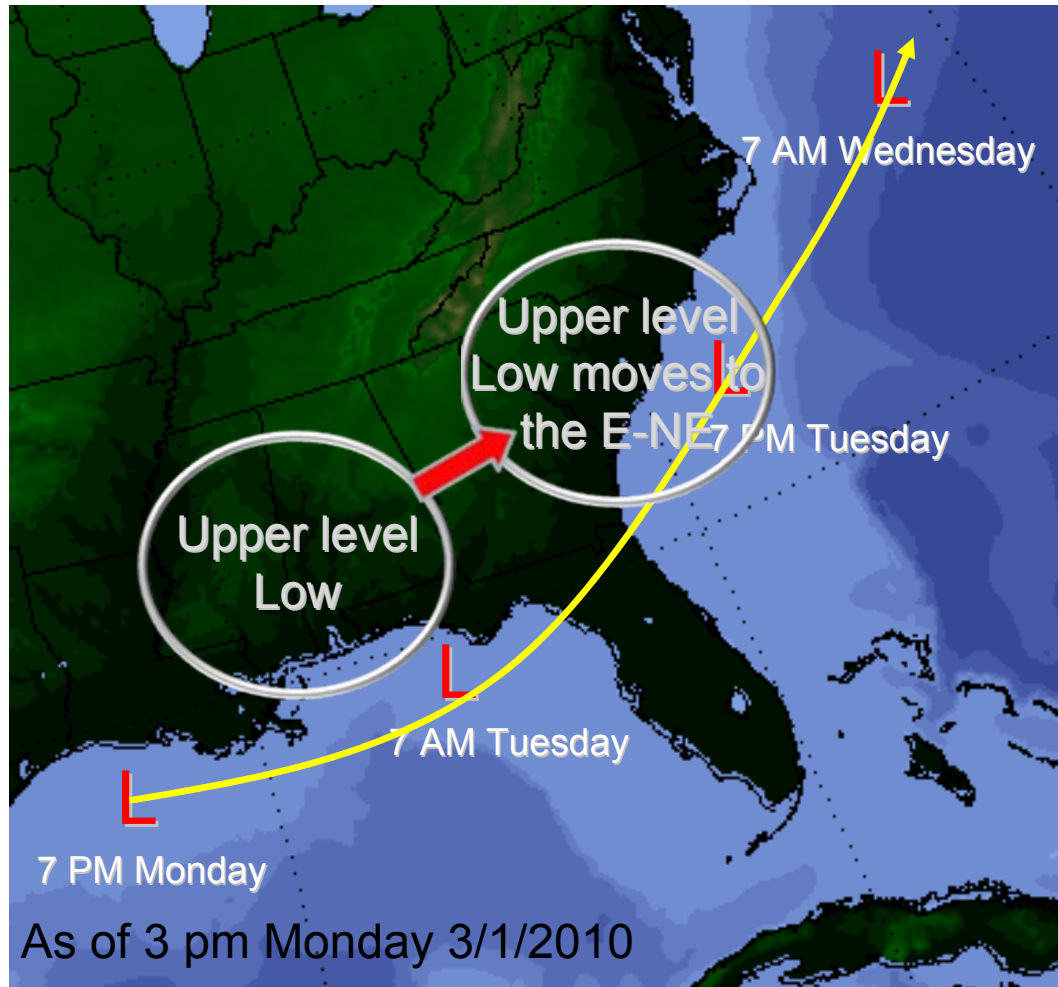
National Weather Service Wilmington, NC

Satellite Imagery – Southern Low Track



- A storm currently over Texas (L) will take a track into the northern Gulf of Mexico tonight through Tuesday. This area of Low pressure will move across northern Florida and off the SE coast on Tuesday and start to intensify. The low will exit the area to the northeast during Wednesday.

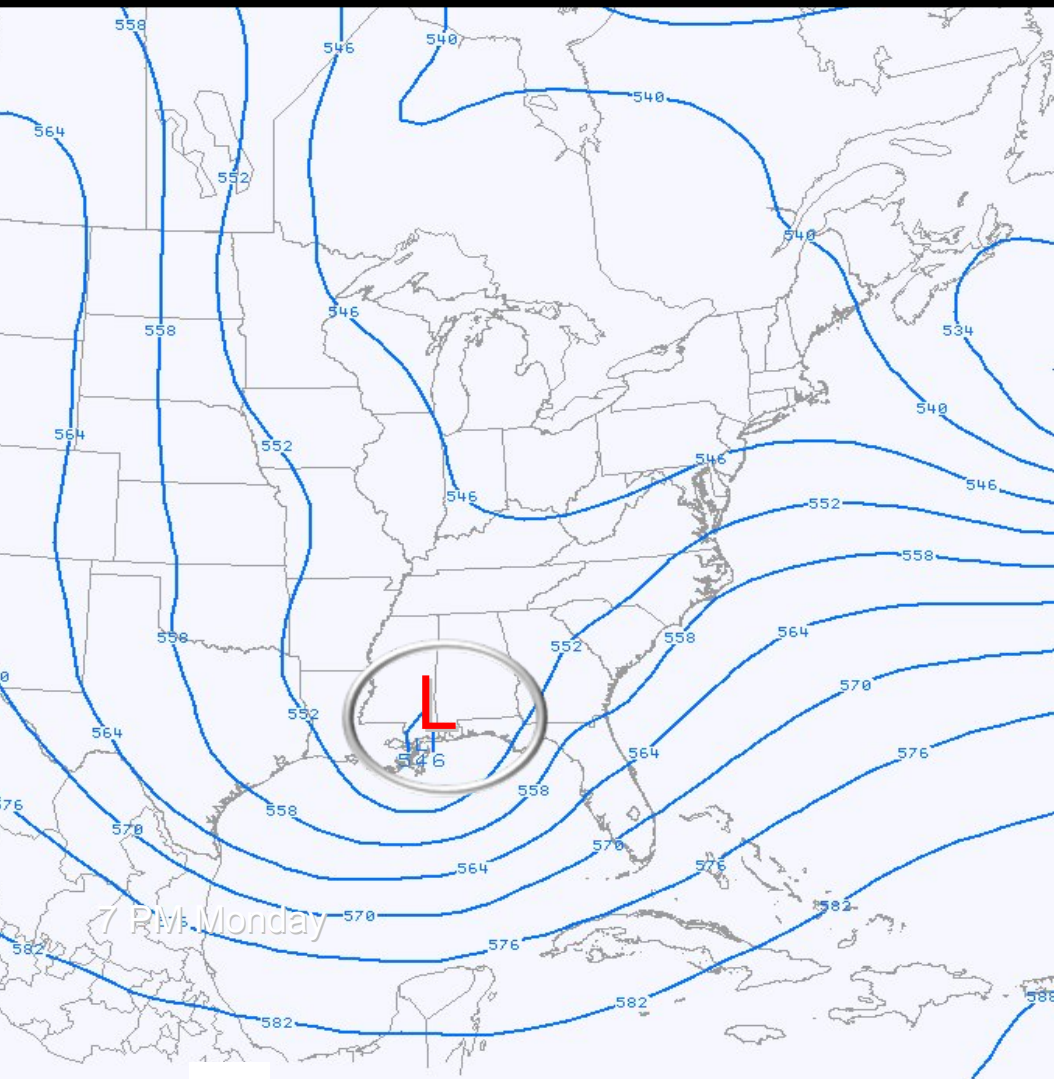
Current Forecast Scenario



- Precipitation is still expected to break out Tuesday morning after 7 am, it could start as a brief period of mixed precipitation across Marlboro, Robeson and Darlington Counties.
- On Tuesday light to moderate rain will fall...it is possible that heavy rain can develop along the coastal counties. Rainfall amounts will range from about .50" inland to around an inch along the coast.
- Precipitation ends Wednesday morning with a changeover to light snow. Accumulations are expected inland.

- Models are generally in good agreement with timing and intensity of the low; the tracks are relatively close. The closed upper low will dig southward into the gulf coast states and will lift to the northeast Tuesday night. The upper level trough deepens³ and lifts to the east by Wednesday.

Current Forecast Scenario

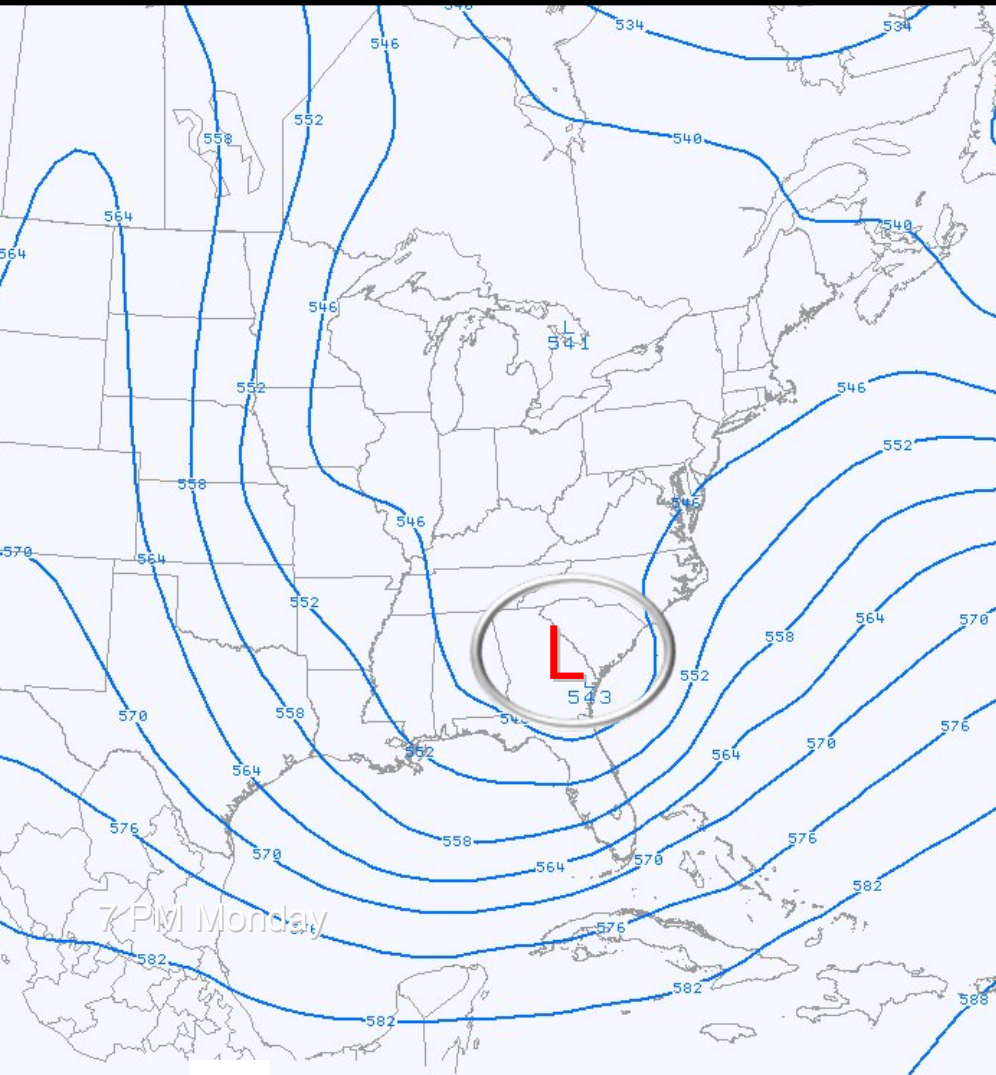


As of 3 pm Monday 3/1/2010

- This is the 500 mb chart from the NAM model which shows the upper low as an open wave. Valid time here is 8 am Tuesday. The upper low is further south than what the models had yesterday. The upper low is forecast to deepen and move to the northeast. This low is carving an large trough that extends from the Ohio valley into the Gulf of Mexico.

NAM80 500MB Vorticity (1e5s)	01.12	24HR	Tue 12:00Z	02-Mar-10
NAM80 500MB Vorticity (/1e5s)	01.12	24HR	Tue 12:00Z	02-Mar-10
NAM80 500MB Temperature (C)	01.12	24HR	Tue 12:00Z	02-Mar-10
NAM80 500MB Height (dam)	01.12	24HR	Tue 12:00Z	02-Mar-10

Current Forecast Scenario

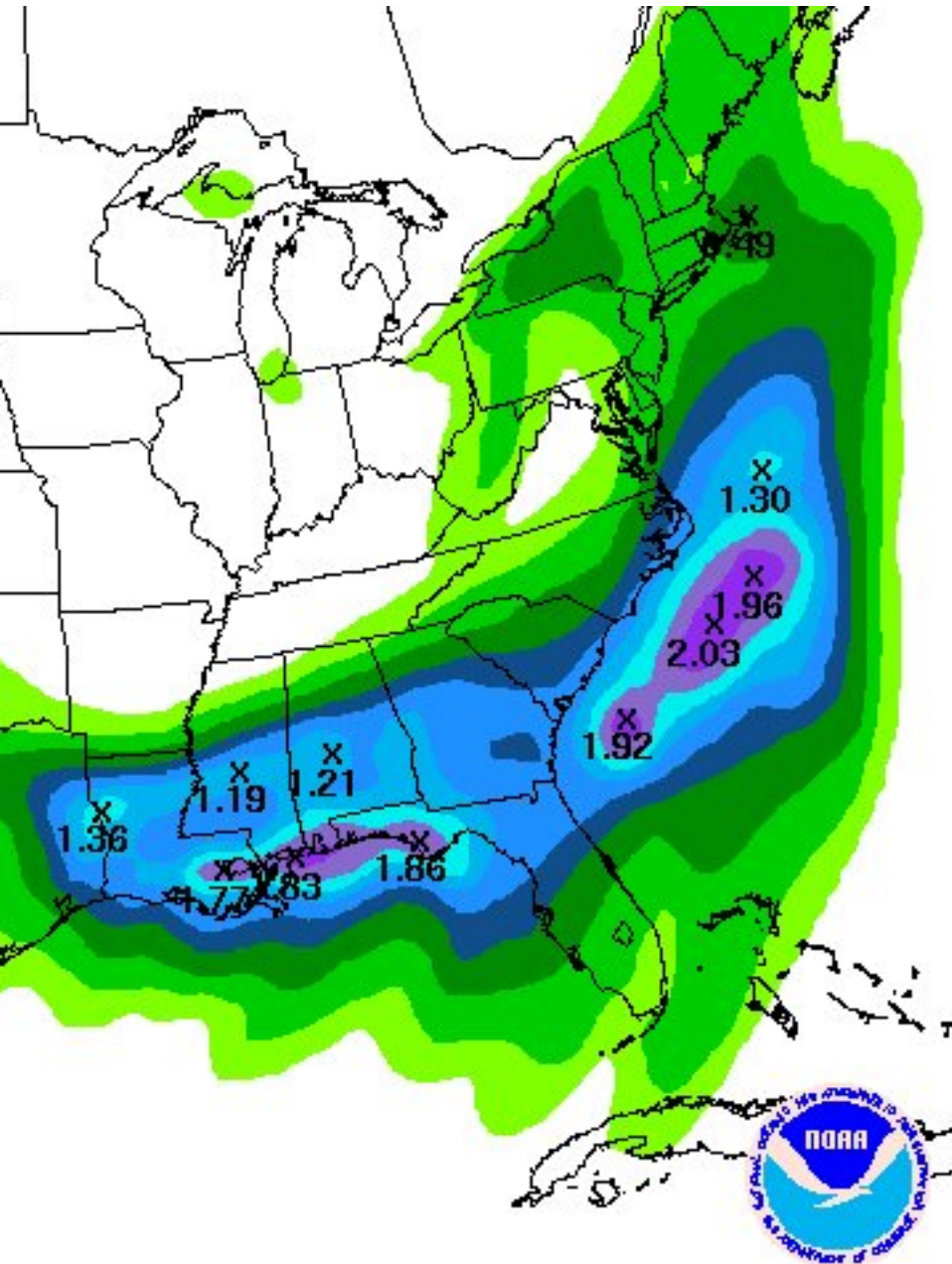


As of 3 pm Monday 3/1/2010

- This is the 500 mb chart from the NAM model which shows the upper low as an open wave. Valid time here is 8 pm Tuesday.

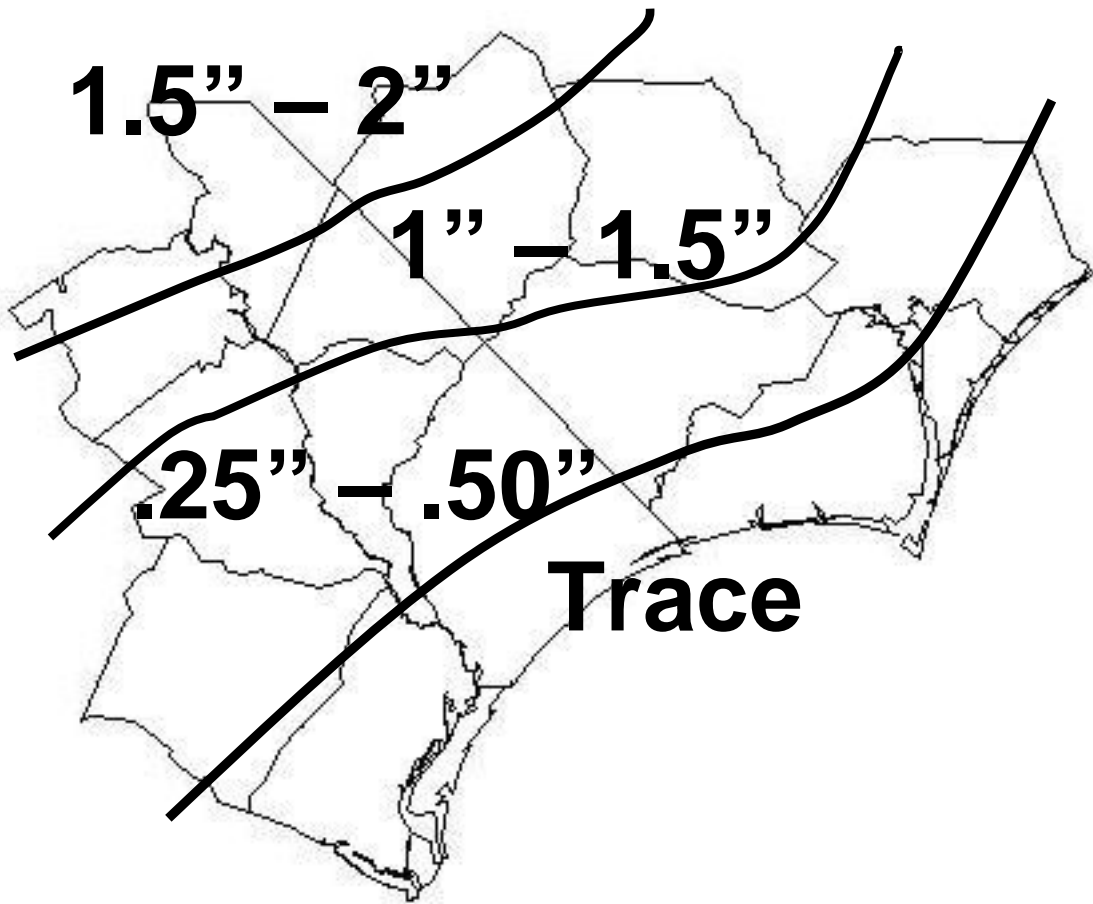
- The upper low has moved to the east-northeast and again is further south than what the models had yesterday. The upper low has deepened. The large trough has moved to the east.

Current QPF Scenario



- The heaviest precipitation is expected to lie along the coastal counties and off the coast.
- QPF amounts of between .50 and .75 inches are forecast, with about an inch near the coast.
- A slight change in the storm track could bring higher amounts of precipitation to the area.
- Snowfall amounts will range from about a trace along the coast to between 1 and 2 inches inland.

Potential snow accumulation totals by Wednesday mid morning.



Potential Impacts



Roads: Localized flooding is possible from rainfall in the coastal counties. The threat of wintry weather will increase the threat of road issues by Wednesday morning across the region.

Power: Minimal at this time.



Coastal Flooding/Beach Erosion: Coastal flooding will be an issue with 1 to 2 feet anomalies expected. Wave action would likely generate beach erosion across east and southeast facing beaches. A coastal flood advisory may be issued.



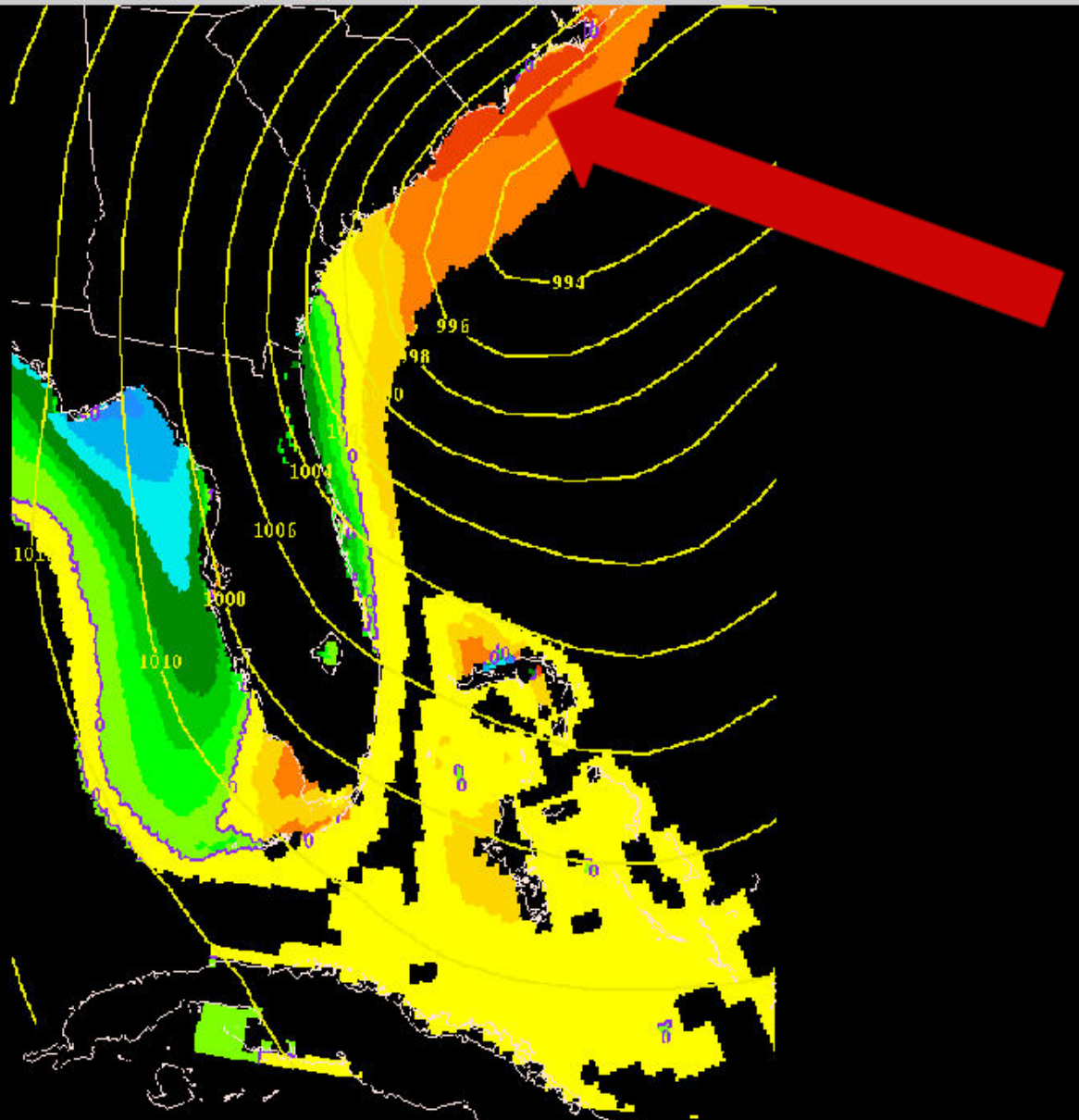
Aviation: IFR conditions likely from low ceilings Tuesday. Could have winter weather impacts at FLO and CLT. LIFR conditions possible all area airports overnight Tuesday. Wednesday wintry weather potential shifting north into the Mid-Atlantic region.



Marine: Rough seas expected. Gale watch to go into effect for Tuesday afternoon and evening. Winds will be NE at 20-30 kts with gusts to 40 backing to the North and then Northwest by Wednesday. Seas will run 9-11 feet offshore with 3-5 feet near shore. Higher over the shoals.

Update: Any updates will be handle via conference call.

Storm Surge Scenario



1-2 feet of surge expected along the coastal counties.

Contacts

Georgetown County EM – 843-545-3273, County Comms. 843-527-6763

Surfside Beach EM – 843-913-6350

Horry County EM – 843-915-5150

Florence County EM – 843-665-7255

Brunswick County EM – 910-253-5383, County Comms. 910-253-7490

Robeson County EM – 910-671-3150

NC State Ports – 910-279-7088

WFO Wilmington, NC Contact and Reference Information

Michael Caropolo, Meteorologist-in-Charge

(910) 762-9616 Michael.Caropolo@noaa.gov

Steve Pfaff, Warning Coordination Meteorologist

(910) 762-0524 x223 Steven.Pfaff@noaa.gov

Reid Hawkins, Science Operations Officer

Donald.Hawkins@noaa.gov

NWS Wilmington, NC website: www.weather.gov/ilm